



ARTERRA DESIGN PTY LTD ABN 40 069 552 610
SUITE 602 / 51 RAWSON STREET, EPPING, NSW 2121
P 02 9957 2466 F 02 9957 3977 W ARTERRA.COM.AU

PROJECT & CLIENT

Aoyuan Moss Vale

Stage 1
Yarrawa Road Moss Vale NSW 2577

Prepared for :
Prime Moss Vale Pty Ltd

Landscape Concept Plans

DRAWING INDEX

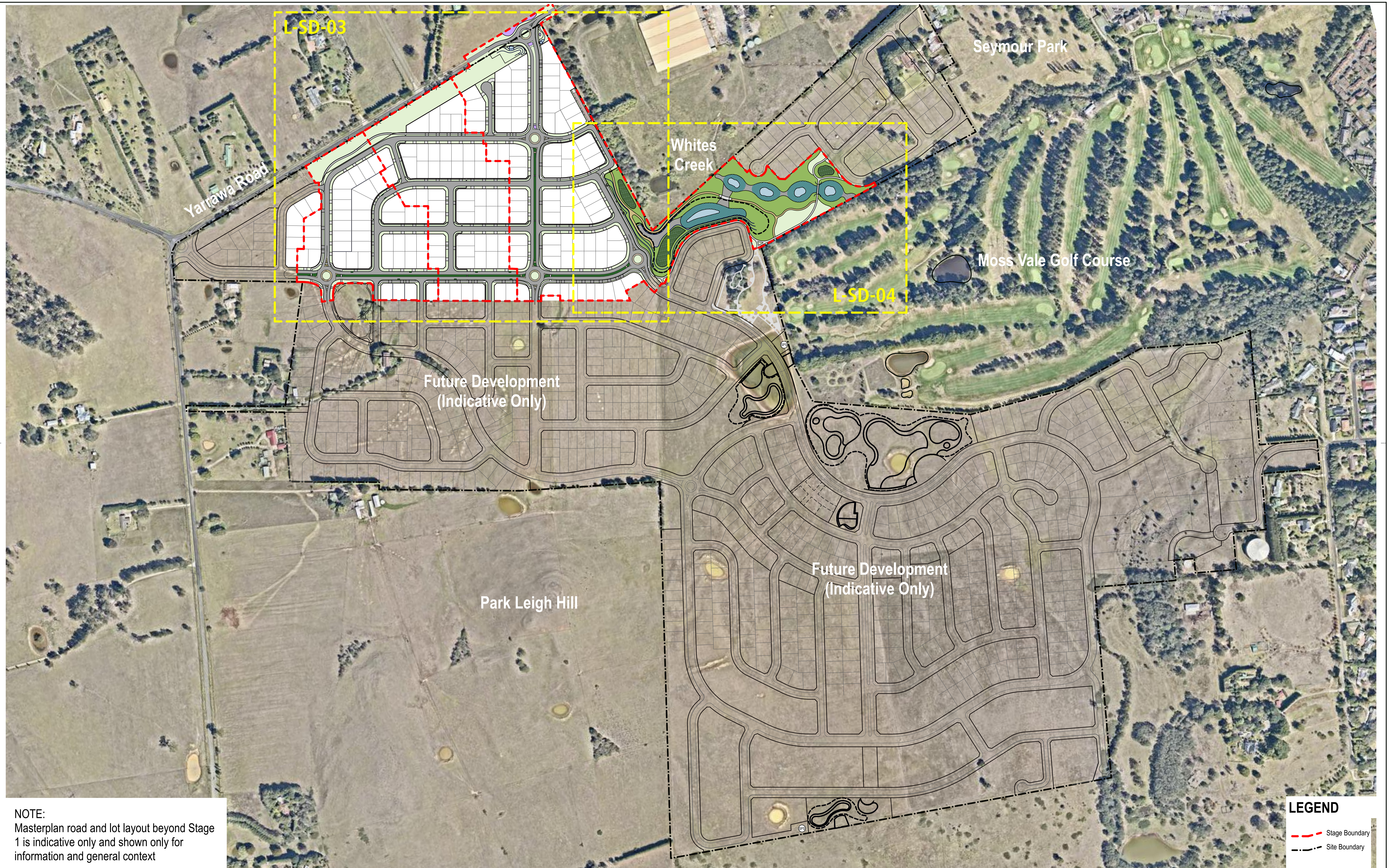
Drawing No:	Drawing Name	Current Rev.
L-SD-01	Cover Sheet	C
L-SD-02	Context Plan	C
L-SD-03	Overall Landscape Plan [South]	C
L-SD-04	Overall Landscape Plan [North]	C
L-SD-05	Landscape Concept Plan [Entry]	C
L-SD-06	Entry Perspectives	C
L-SD-07	Entry Perspectives	C
L-SD-08	Typical Street Arrangements	C
L-SD-09	Typical Street Arrangements	C
L-SD-10	Typical Street Arrangements	C
L-SD-11	Typical Street Arrangements	C
L-SD-12	Typical Street Arrangements	C
L-SD-13	Typical Street Arrangements	C
L-SD-14	Yarrawa Road Frontage	C
L-SD-15	Typical Whites Creek Section	C
L-SD-16	Indicative Plant Schedule & Character Images	C
L-SD-17	Typical Planting Detail - Boulevard Median	A
L-SD-18	Indicative Lighting Layout Plan	C

DATE :

6 October 2020

ISSUE :

For Development Application [Updated]



NOTE:
Masterplan road and lot layout beyond Stage 1 is indicative only and shown only for information and general context

LEGEND

- - - Stage Boundary
- - - Site Boundary



ARTERRA DESIGN PTY LTD ABN 40 069 552 610
SUITE 602 / 51 RAWSON STREET, EPPING, NSW 2121
P 02 9957 2466 F 02 9957 3977 W ARTERRA.COM.AU



REVISION	DESCRIPTION	CHKD	DATE
C	For Development Application-Updated	RWS	01/10/20
B	For Development Application	RWS	18/11/19
A	For Development Application	RWS	12/07/19

PROJECT & CLIENT
Aoyuan Moss Vale

Prime Moss Vale Pty Ltd

DRAWING TITLE
Context Plan

Project No : 18.08
Designed : RWS
Drawn : RWS/SK
Scale : 1:3000@A1/1:6000@A3

DRAWING NUMBER
L-SD-02 REVISION
C

Printed at: 12:35 pm 01/10/20

NOTE:
All private driveways to be installed as plain grey concrete between back of kerb and lot boundary

Waterfeature and civic scaled sculpture
Terraced stone walling and landform mounding to provide separation and screening of housing beyond and reinforce sense of entry and arrival

Shared path connection to Yarrawa Road
Flanking walls, water feature and civic scaled sculptural elements either side of main entry to announce arrival into the residential area of the estate
Planted median to calm traffic and reinforce sense of entry and arrival

Rural style post & rail fence along boundary to Yarrawa Road together with dense conifer hedge and evergreen planting behind

Dense native shrub and tree planting along Yarrawa Road to provide visual buffer and windbreak along Yarrawa Road

Grass lined swale to control and manage stormwater before discharge to drainage system

Meandering 2.5m shared pathway through buffer zone

Access gate and vehicular bollards to prevent unauthorised access

Dense planting around ponds and stormwater infrastructure

Concrete extension to shared path with seating platform

Park subject to future detail (not part of Stage 1 DA)

- LEGEND**
- - - Stage 1 DA boundary
 - - - Boundary
 - Wall
 - Hedge Planting
 - Road
 - Concrete Road
 - Driveway Crossing (Notional location depicted)
 - Pedestrian Path
 - Gravel Path
 - Grass Swale
 - Native Planting
 - Turf Lawn
 - Median Planting
 - Feature Exotic Planting
 - Water

- Acer rubrum 'October Glory' (Red Maple)
- Betula nigra 'Dura Heat' (River Birch)
- Pyrus calleryana 'Chanticleer' (Callery Pear)
- Koelreuteria bipinnata (Chinese Golden Rain Tree)
- Liriodendron tulipifera (Tulip Tree)
- Nyssa sylvatica (Black Tupelo)
- Quercus cerris (Turkey Oak)
- Quercus ilex (Holm Oak)
- Quercus lusitanica (Lusitanian Oak)
- Quercus palustris 'EDF' (Pin Oak - Early Defoliating Form)
- Styphonolobium japonicum (Japanese Pagoda Tree)
- Ulmus parvifolia 'Todd' (Chinese Elm- sterile)
- Zelkova serrata 'Green Vase' (Japanese Zelkova)
- Eucalyptus cephalocarpa (Silver Stringybark)
- Eucalyptus cinerea (Argyle Apple)
- Eucalyptus amplifolia (Cabbage Gum)
- Eucalyptus mannifera (Brittle Gum)
- Native Trees (Refer to Indicative Schedule)
- Exotic Open Space Feature Trees (Refer to Indicative Schedule)
- Sculptural Feature Elements



ARTERRA DESIGN PTY LTD ABN 40 069 552 610
SUITE 602 / 51 RAWSON STREET, EPPING, NSW 2121
P 02 9957 2466 F 02 9957 3977 W ARTERRA.COM.AU



REVISION	DESCRIPTION	CHKD	DATE
C	For Development Application-Updated	RWS	01/10/20
B	For Development Application	RWS	18/11/19
A	For Development Application	RWS	12/07/19

PROJECT & CLIENT
Aoyuan Moss Vale

Prime Moss Vale Pty Ltd

DRAWING NUMBER
Overall Landscape Plan [South]

Project No : 18.08
Designed : RWS
Drawn : RWS/SK
Scale : 1:1000@A11:2000@A3

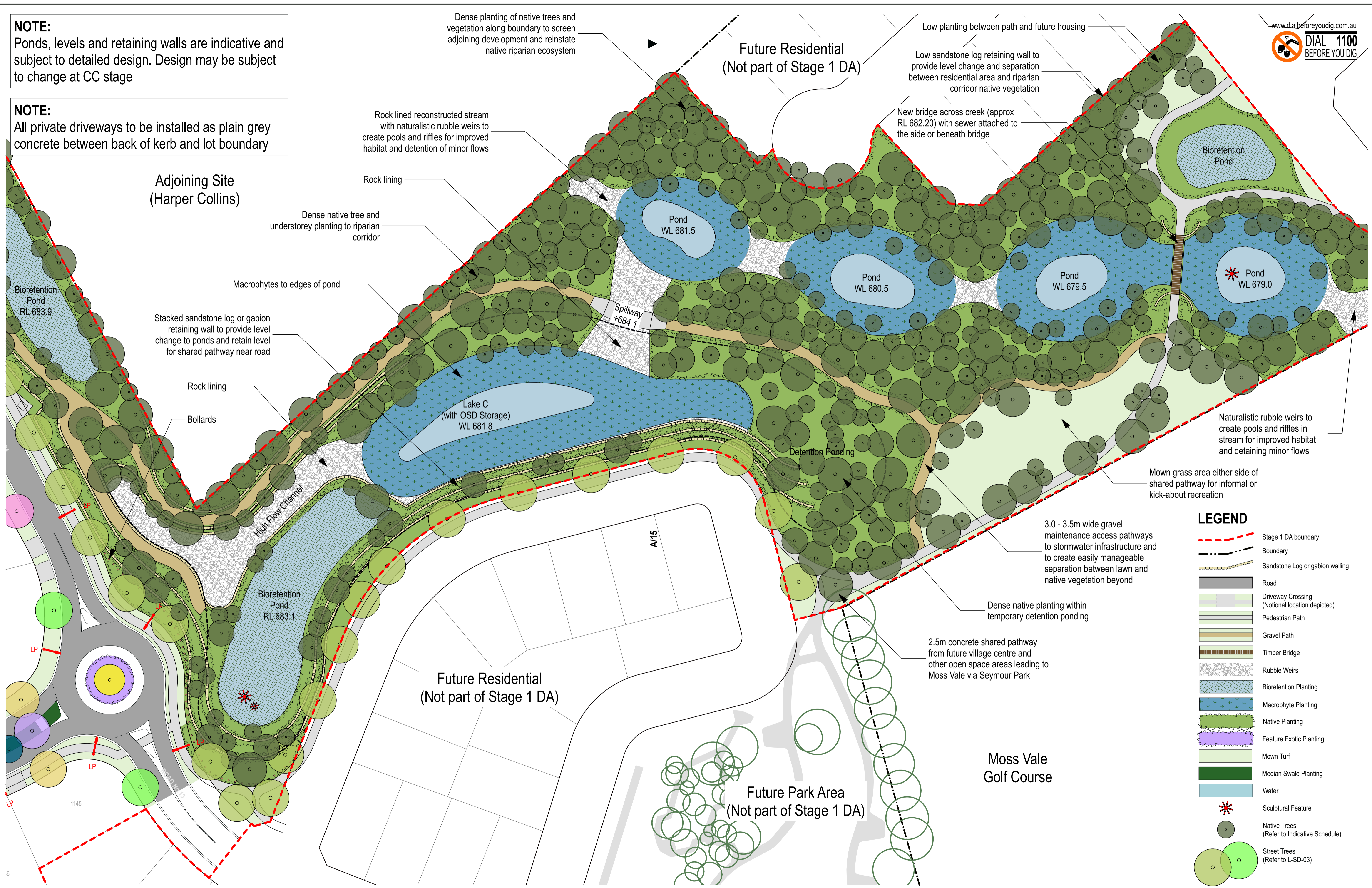
DRAWING NUMBER
L-SD-03

REVISION
C

Printed at: 12:35 pm 01/10/20

NOTE:
Ponds, levels and retaining walls are indicative and subject to detailed design. Design may be subject to change at CC stage

NOTE:
All private driveways to be installed as plain grey concrete between back of kerb and lot boundary



www.dialbeforeyoudig.com.au

- LEGEND**
- Stage 1 DA boundary
 - Boundary
 - Sandstone Log or gabion walling
 - Road
 - Driveway Crossing (Notional location depicted)
 - Pedestrian Path
 - Gravel Path
 - Timber Bridge
 - Rubble Weirs
 - Bioretention Planting
 - Macrophyte Planting
 - Native Planting
 - Feature Exotic Planting
 - Mown Turf
 - Median Swale Planting
 - Water
 - Sculptural Feature
 - Native Trees (Refer to Indicative Schedule)
 - Street Trees (Refer to L-SD-03)



REVISION	DESCRIPTION	CHKD	DATE
C	For Development Application-Updated	RWS	01/10/20
B	For Development Application	RWS	18/11/19
A	For Development Application	RWS	12/07/19

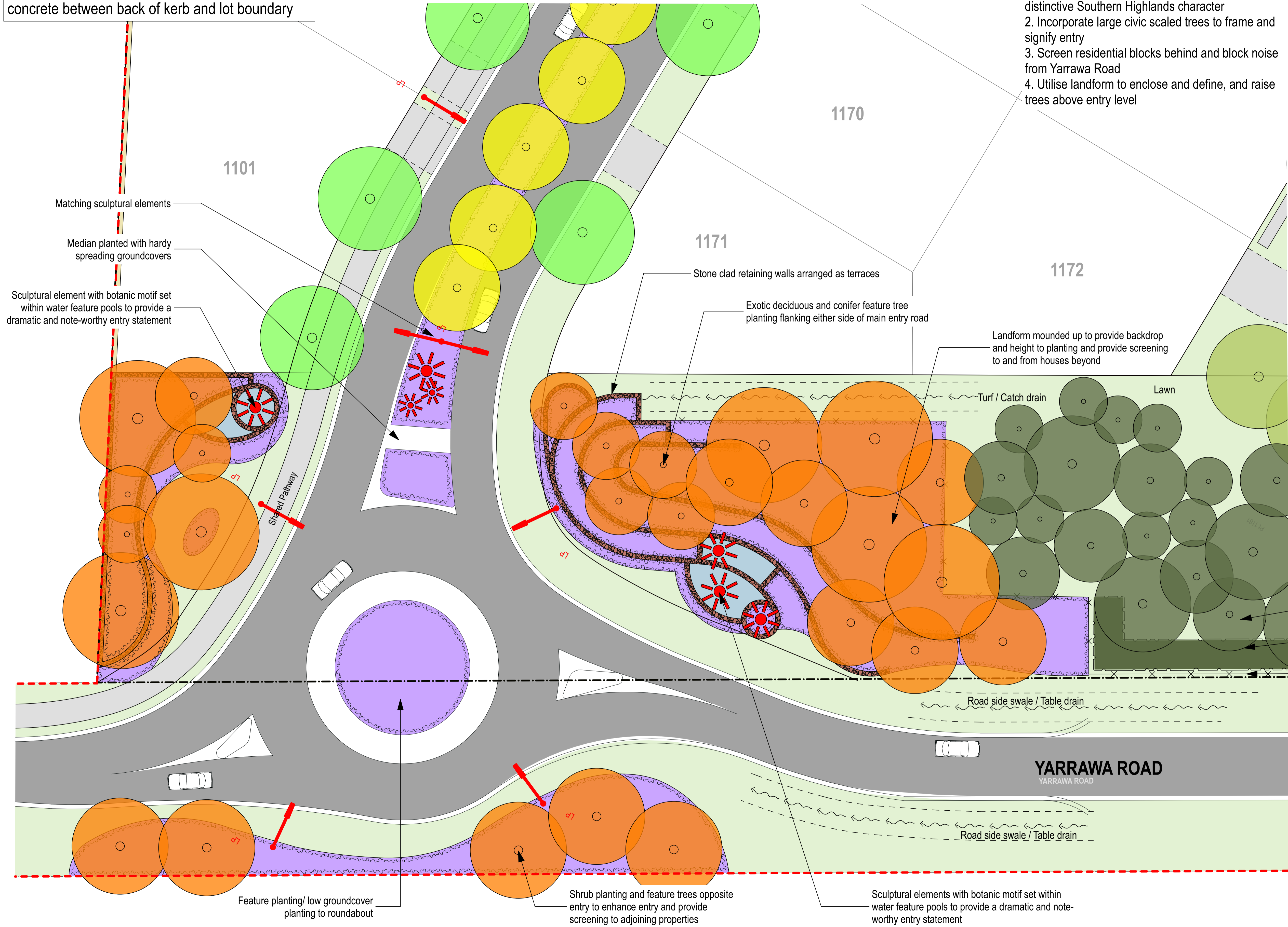
NOTE:
All private driveways to be installed as plain grey concrete between back of kerb and lot boundary

ENTRY DESIGN OBJECTIVES

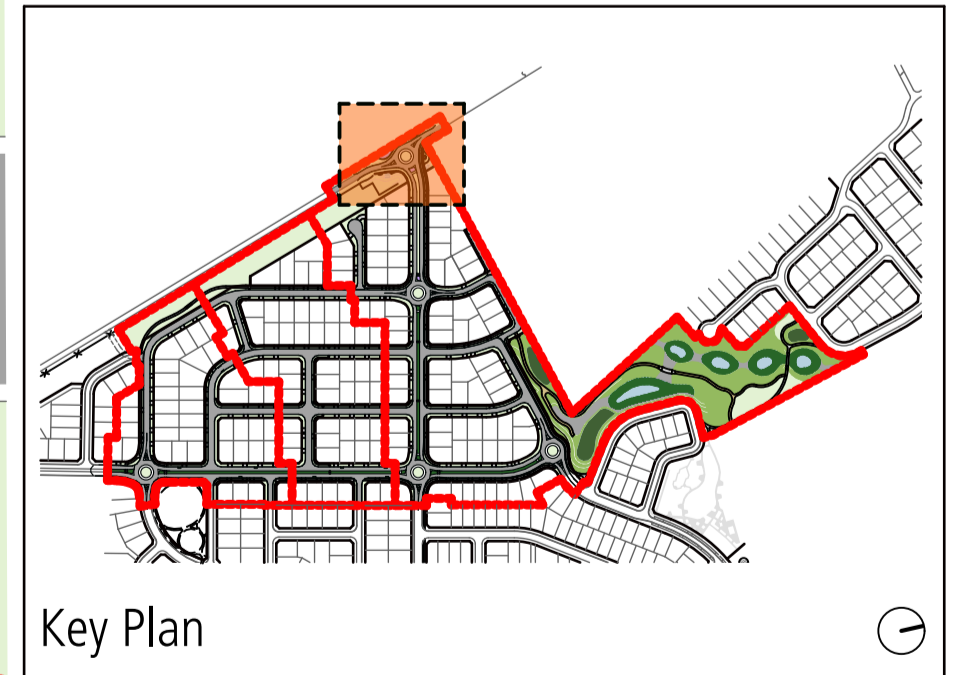
1. Create a generous sense of entry with a distinctive Southern Highlands character
2. Incorporate large civic scaled trees to frame and signify entry
3. Screen residential blocks behind and block noise from Yarrawa Road
4. Utilise landform to enclose and define, and raise trees above entry level

LEGEND

- Stage boundary
- Boundary
- Timber Rural Style Fence
- Stone Wall
- Wall
- Road Carriageway
- Driveway Crossing (Notional location depicted)
- Pedestrian Path
- Turf Lawn
- Water
- Feature Exotic Planting
- Grass Swale
- Dense Hedge Planting
- Sculptural Feature
- Buffer Planting
- Feature Tree
- Street Tree



- Dense buffer planting including native trees and under storey
- Dense large native and conifer screening hedge along road edge
- Timber rural style post and rail fencing to boundary



Feature planting/ low groundcover planting to roundabout

Shrub planting and feature trees opposite entry to enhance entry and provide screening to adjoining properties

Sculptural elements with botanic motif set within water feature pools to provide a dramatic and note-worthy entry statement



ARTERRA DESIGN PTY LTD ABN 40 069 552 610
SUITE 602 / 51 RAWSON STREET, EPPING, NSW 2121
P 02 9957 2466 F 02 9957 3977 W ARTERRA.COM.AU

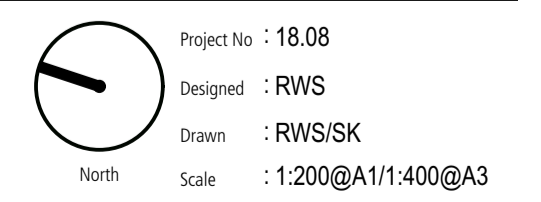


REVISION	DESCRIPTION	CHKD	DATE
C	For Development Application-Updated	RWS	01/10/20
B	For Development Application	RWS	18/11/19
A	For Development Application	RWS	12/07/19

PROJECT & CLIENT
Aoyuan Moss Vale

Prime Moss Vale Pty Ltd

DRAWING TITLE
Landscape Concept Plan [Entry]



DRAWING NUMBER
L-SD-05

Printed at: 12:36 pm 01/10/20



A

INDICATIVE PERSPECTIVE VIEW OF ENTRY



B

INDICATIVE PERSPECTIVE VIEW OF ENTRY



ARTERRA DESIGN PTY LTD ABN 40 069 552 610
 SUITE 602 / 51 RAWSON STREET, EPPING, NSW 2121
 P 02 9957 2466 F 02 9957 3977 W ARTERRA.COM.AU



REVISION	DESCRIPTION	CHKD	DATE
C	For Development Application-Updated	RWS	6/10/20
B	For Development Application	RWS	18/11/19
A	For Development Application	RWS	12/07/19

PROJECT & CLIENT
 Aoyuan Moss Vale

Prime Moss Vale Pty Ltd

DRAWING TITLE
 Entry Perspectives

Project No : 18.08
 Designed : RWS
 Drawn : RWS/SK
 North Scale :

DRAWING NUMBER
 L-SD-06

REVISION
 C

Printed at: 12:36 pm 6/10/20



C INDICATIVE PERSPECTIVE VIEW OF ENTRY



D INDICATIVE PERSPECTIVE VIEW OF ENTRY



ARTERRA DESIGN PTY LTD ABN 40 069 552 610
 SUITE 602 / 51 RAWSON STREET, EPPING, NSW 2121
 P 02 9957 2466 F 02 9957 3977 W ARTERRA.COM.AU



REVISION	DESCRIPTION	CHKD	DATE
C	For Development Application-Updated	RWS	01/10/20
B	For Development Application	RWS	18/11/19
A	For Development Application	RWS	12/07/19

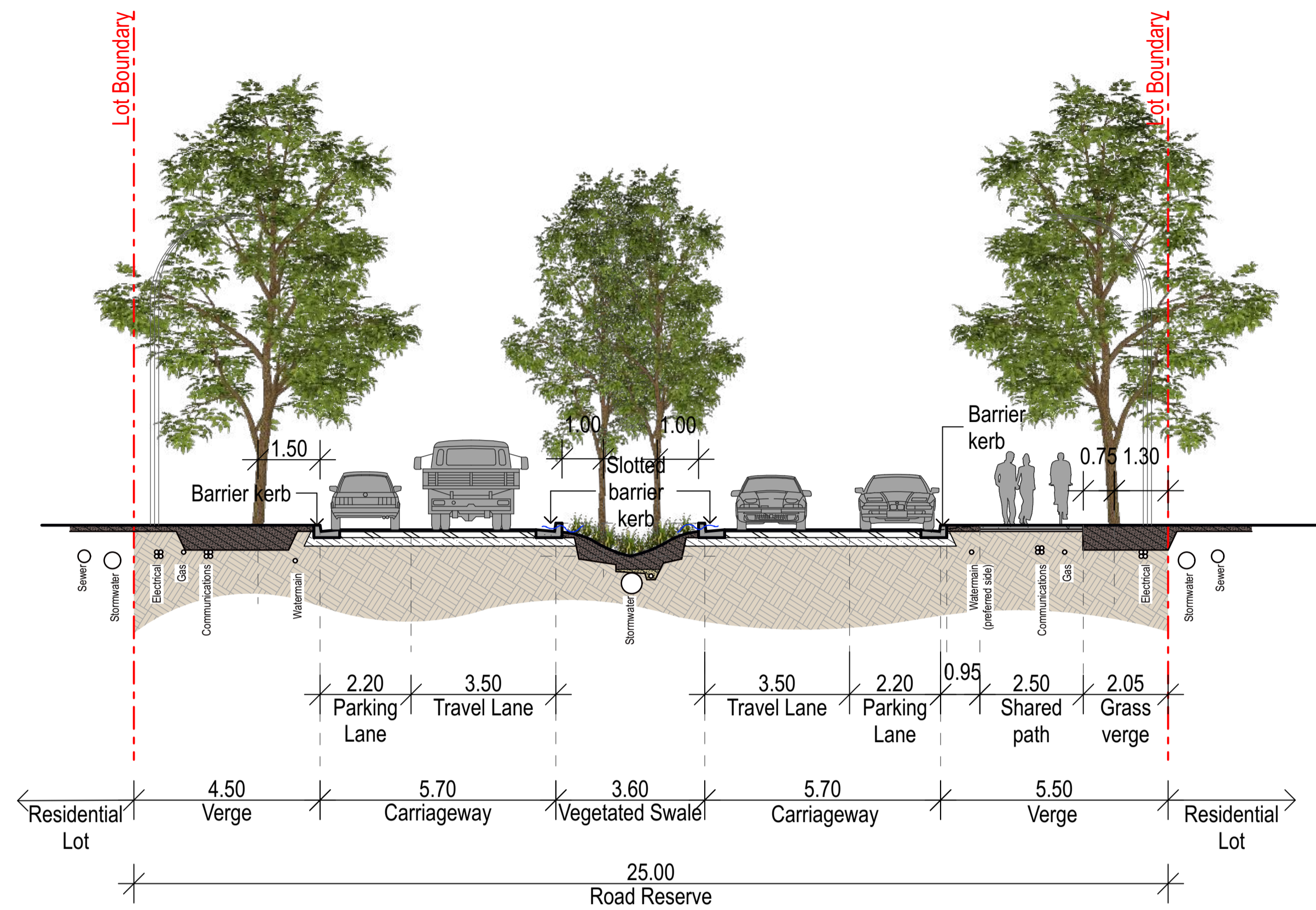
PROJECT & CLIENT
Aoyuan Moss Vale

Prime Moss Vale Pty Ltd

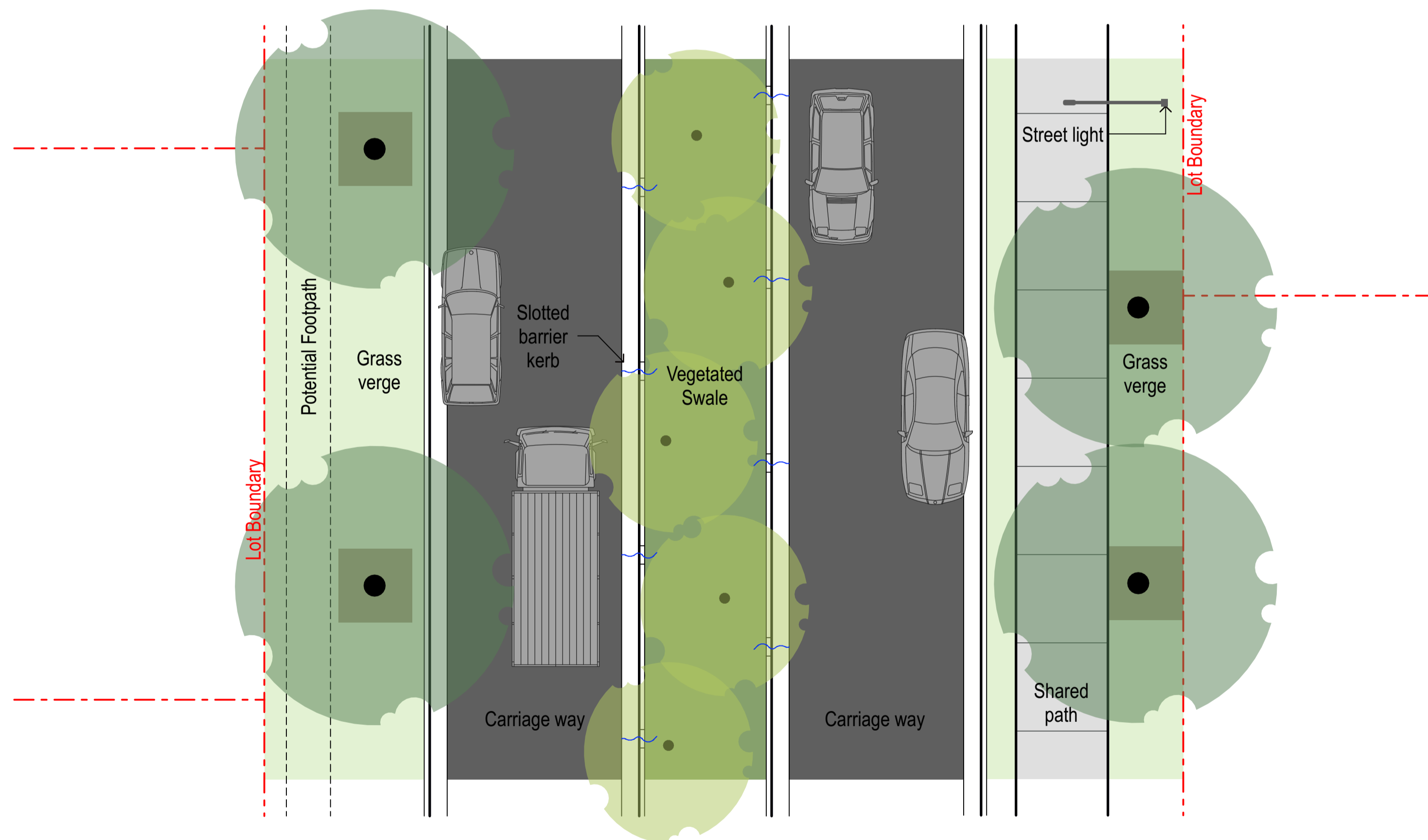
DRAWING TITLE
Entry Perspectives

Project No : 18.08
 Designed : RWS
 Drawn : RWS/SK
 North Scale :

DRAWING NUMBER
L-SD-07 REVISION
C



Indicative perspective view of median boulevard streetscape



Primary street trees Quercus lusitanica (Lusitanian Oak) to line median boulevard street



Betula nigra 'Dura Heat' (River Birch) proposed as primary median tree

A TYPICAL BOULEVARD 1 (B1) CENTRAL VEGETATED DRAINAGE - 25M

Scale 1: 100



ARTERRA DESIGN PTY LTD ABN 40 069 552 610
 SUITE 602 / 51 RAWSON STREET, EPPING, NSW 2121
 P 02 9957 2466 F 02 9957 3977 W ARTERRA.COM.AU



REVISION	DESCRIPTION	CHKD	DATE
C	For Development Application-Updated	RWS	6/10/20
B	For Development Application	RWS	18/11/19
A	For Development Application	RWS	12/07/19

PROJECT & CLIENT
Aoyuan Moss Vale

Prime Moss Vale Pty Ltd

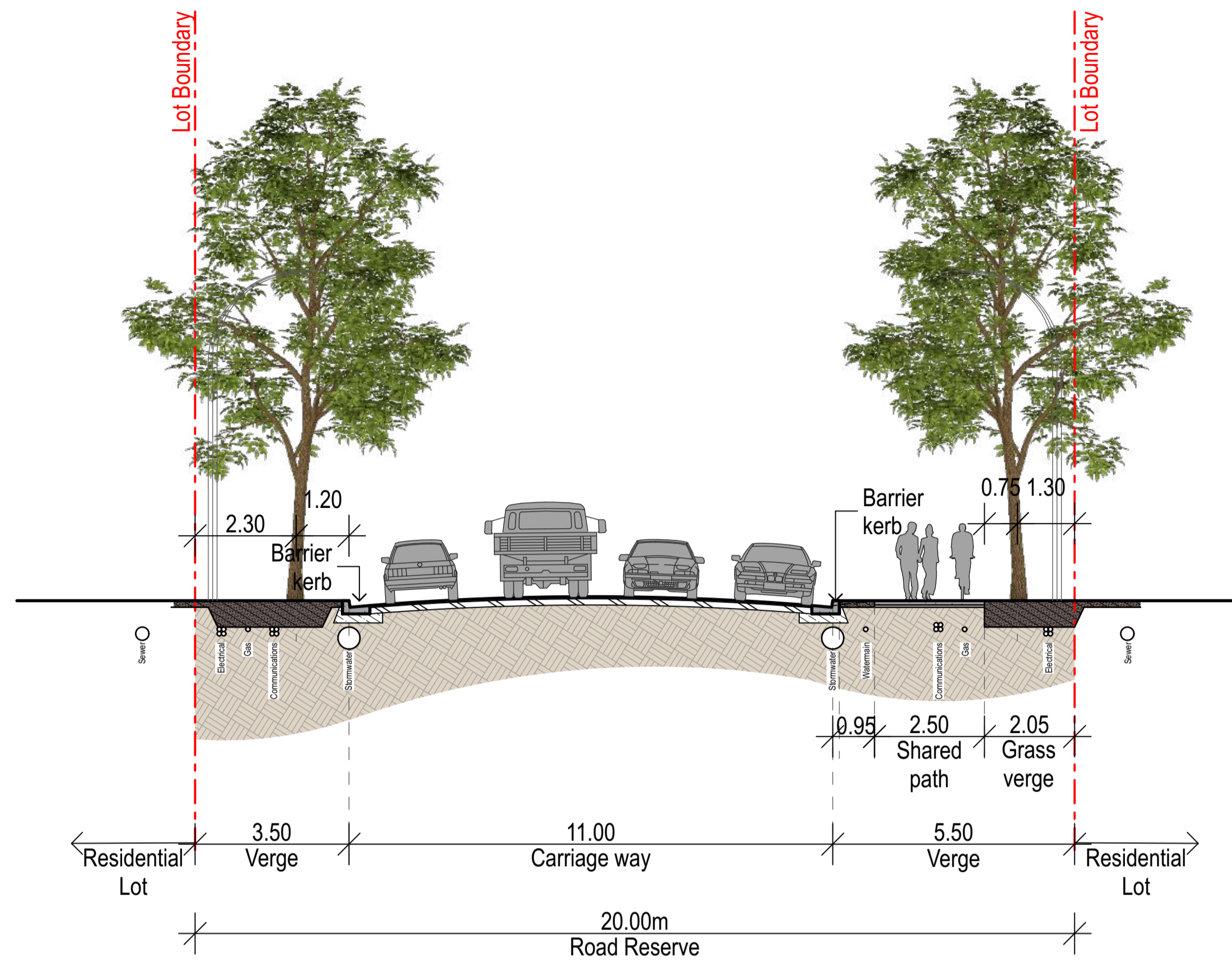
DRAWING TITLE
Typical Street Arrangements

Project No : 18.08
Designed : RWS
Drawn : RWS/SK
North Scale : 1:100@A1/1:200@A3

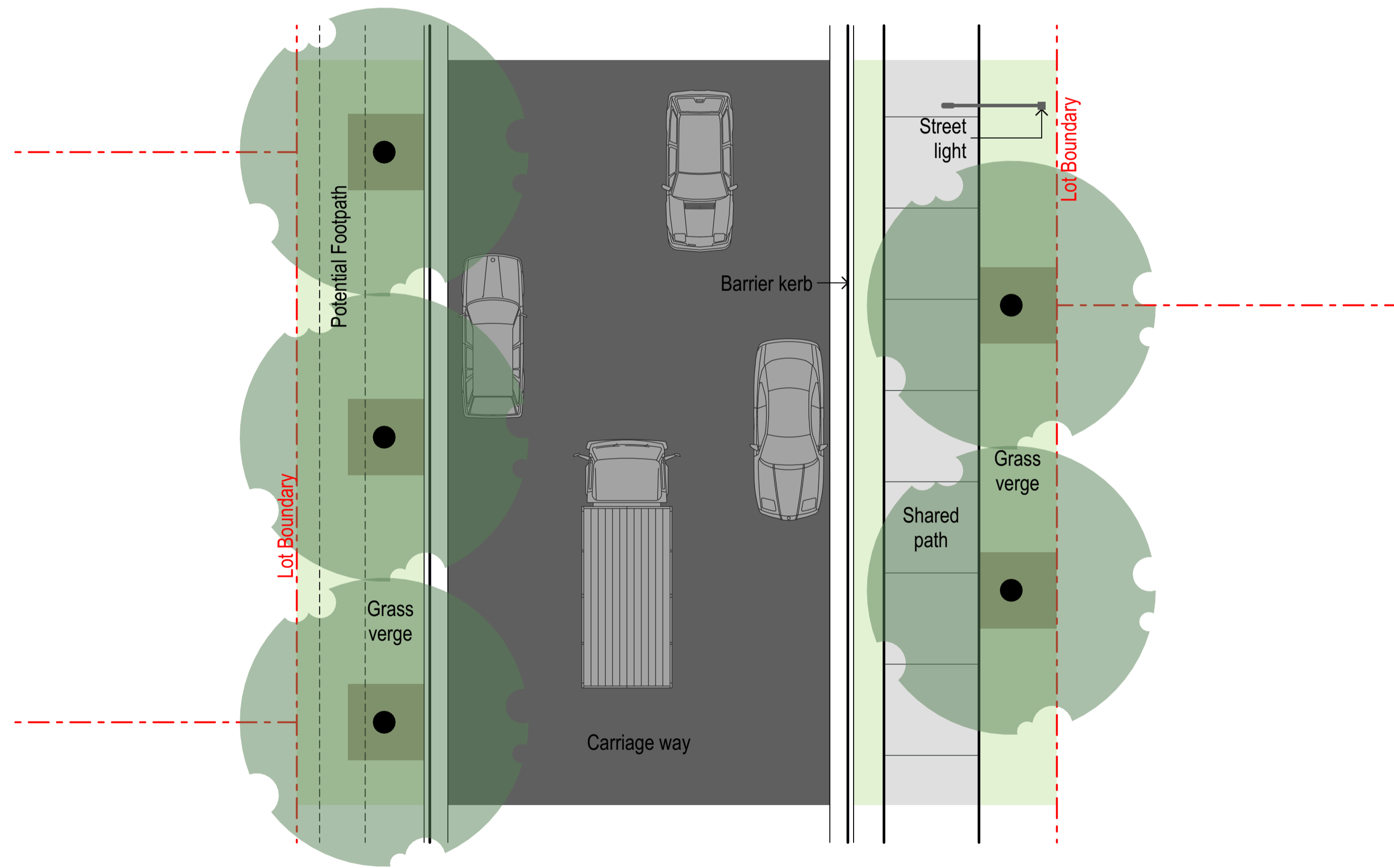
DRAWING NUMBER
L-SD-08

REVISION
C

Printed at: 12:36 pm 6/10/20



Indicative perspective view of streetscape



A TYPICAL BOULEVARD 3 (B3) - 20M

Scale 1: 100



Primary street tree *Quercus palustris* 'EDF' (Pin Oak-Early Defoliating Form) to line boulevard streets



Acer rubrum 'October Glory' (Red Maple) at feature points



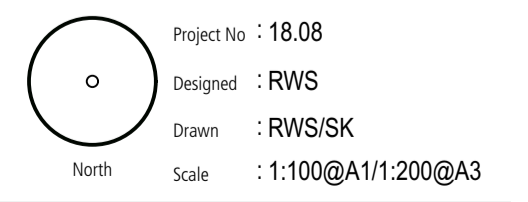
ARTERRA DESIGN PTY LTD ABN 40 069 552 610
 SUITE 602 / 51 RAWSON STREET, EPPING, NSW 2121
 P 02 9957 2466 F 02 9957 3977 W ARTERRA.COM.AU



REVISION	DESCRIPTION	CHKD	DATE
C	For Development Application-Updated	RWS	6/10/20
B	For Development Application	RWS	18/11/19
A	For Development Application	RWS	12/07/19

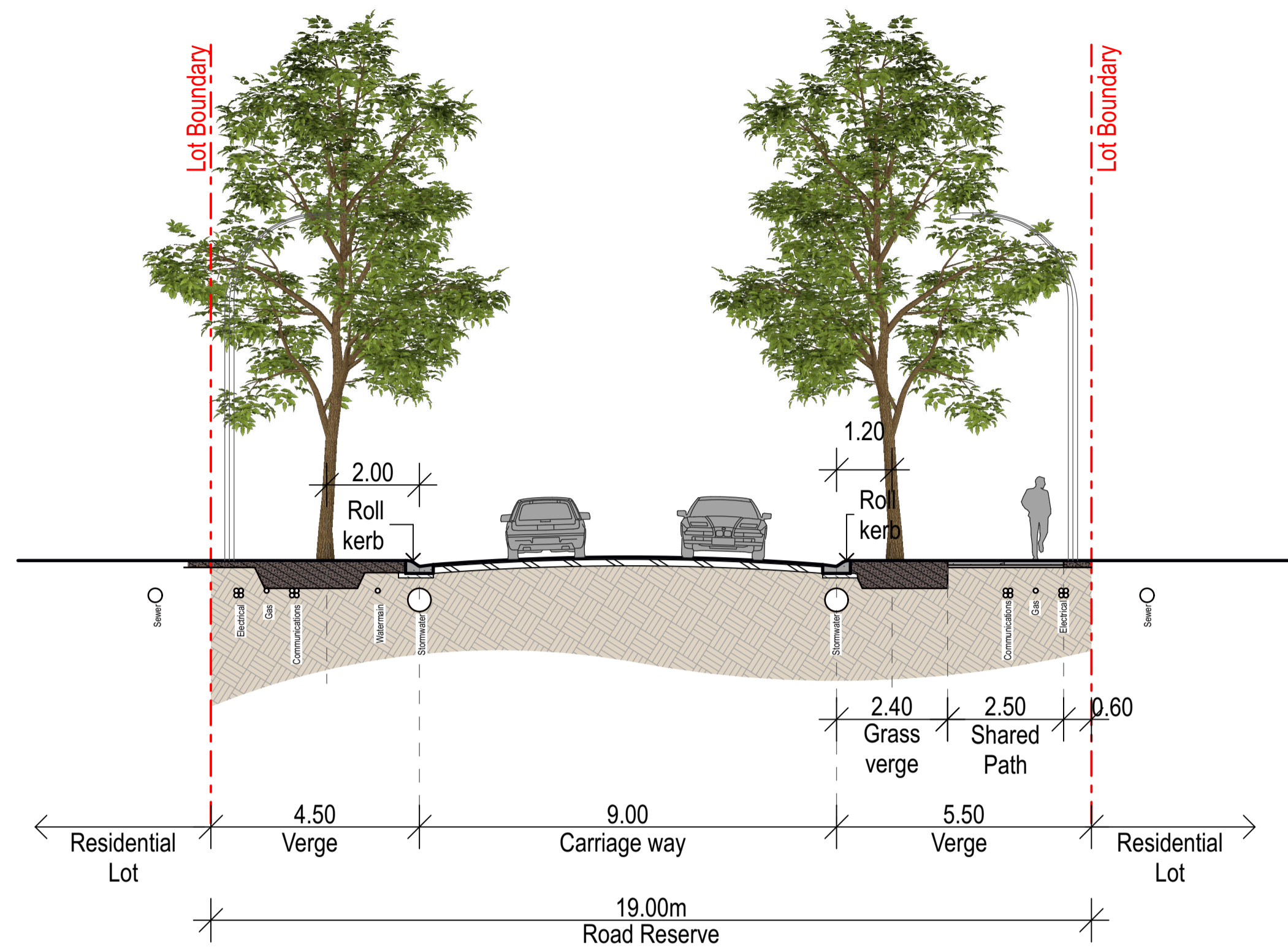
PROJECT & CLIENT
Aoyuan Moss Vale

Prime Moss Vale Pty Ltd
 DRAWING TITLE
Typical Street Arrangements

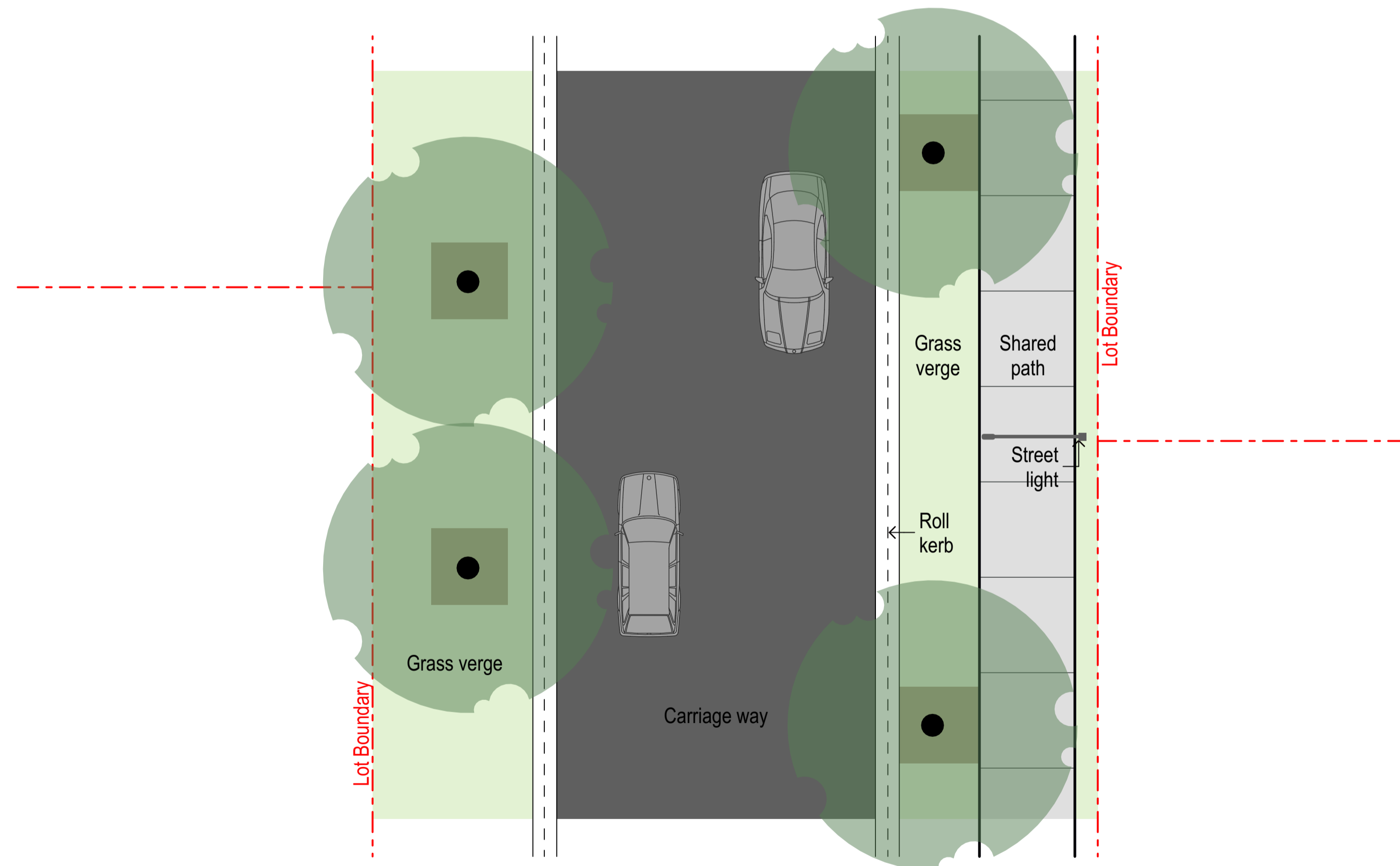


Project No : 18.08
 Designed : RWS
 Drawn : RWS/SK
 Scale : 1:100@A1/1:200@A3

DRAWING NUMBER
L-SD-09
 REVISION
C



Indicative perspective view of streetscape



Primary Street Trees Quercus cerris (Turkey Oak) and Styphnolobium japonicum (Japanese Pagoda Tree) to line access streets

A LOCAL ACCESS STREET (L1b) WITH SHARED PATH - 19M VARIANT Scale 1: 100



ARTERRA DESIGN PTY LTD ABN 40 069 552 610
 SUITE 602 / 51 RAWSON STREET, EPPING, NSW 2121
 P 02 9957 2466 F 02 9957 3977 W ARTERRA.COM.AU

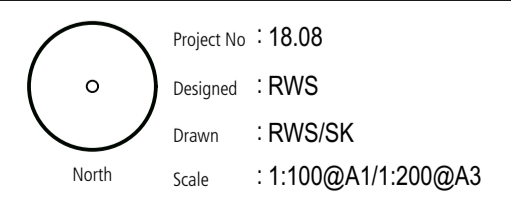


REVISION	DESCRIPTION	CHKD	DATE
C	For Development Application-Updated	RWS	6/10/20
B	For Development Application	RWS	18/11/19
A	For Development Application	RWS	12/07/19

PROJECT & CLIENT
Aoyuan Moss Vale

Prime Moss Vale Pty Ltd

DRAWING TITLE
Typical Street Arrangements

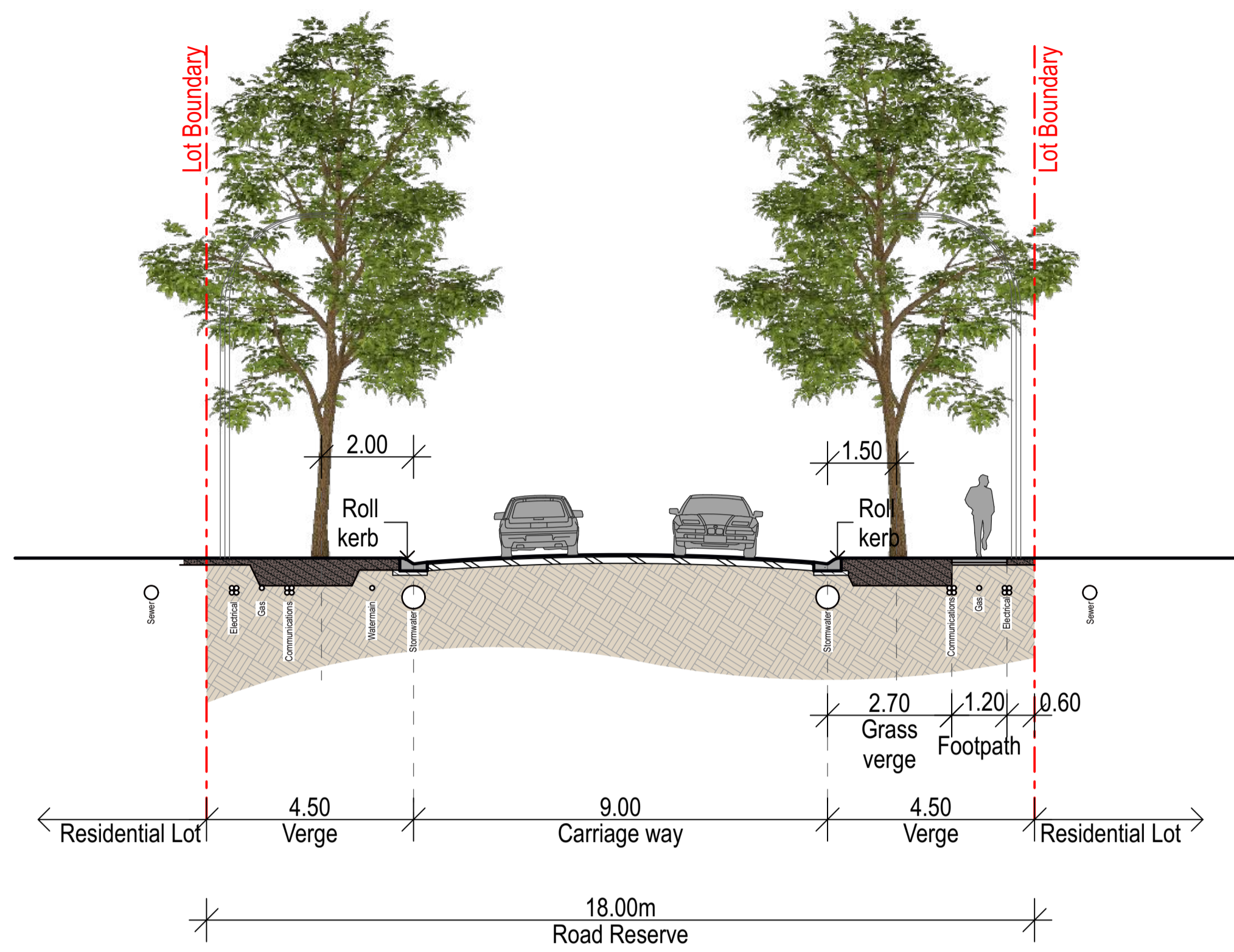


Project No : 18.08
 Designed : RWS
 Drawn : RWS/SK
 Scale : 1:100@A1/1:200@A3

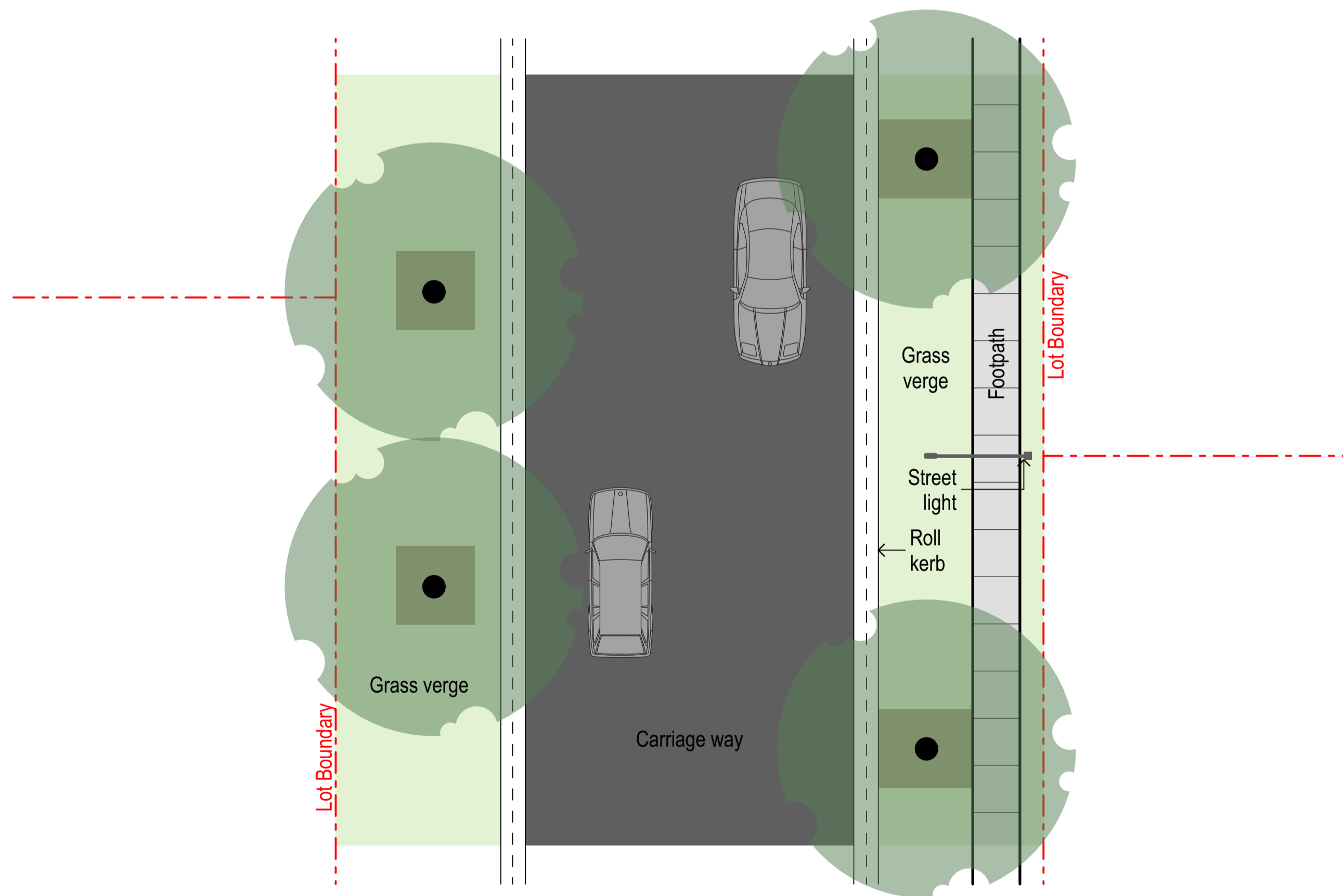
DRAWING NUMBER
L-SD-10

REVISION
C

Printed at: 12:36 pm 6/10/20



Perspective view of streetscape



Primary Street Trees Zelkova serrata 'Green Vase' (Japanese Zelkova) and Koelreuteria bipinnata (Chinese Golden Rain Tree) to line access streets

NOTE:
Verge width expanded on path side to 5.50m when access street accommodates the 2.5m shared pathway (refer L-SD-10)

A TYPICAL LOCAL ACCESS STREET (L1) - 18M
Scale 1: 100



ARTERRA DESIGN PTY LTD ABN 40 069 552 610
SUITE 602 / 51 RAWSON STREET, EPPING, NSW 2121
P 02 9957 2466 F 02 9957 3977 W ARTERRA.COM.AU



REVISION	DESCRIPTION	CHKD	DATE
C	For Development Application-Updated	RWS	01/10/20
B	For Development Application	RWS	18/11/19
A	For Development Application	RWS	12/07/19

PROJECT & CLIENT
Aoyuan Moss Vale

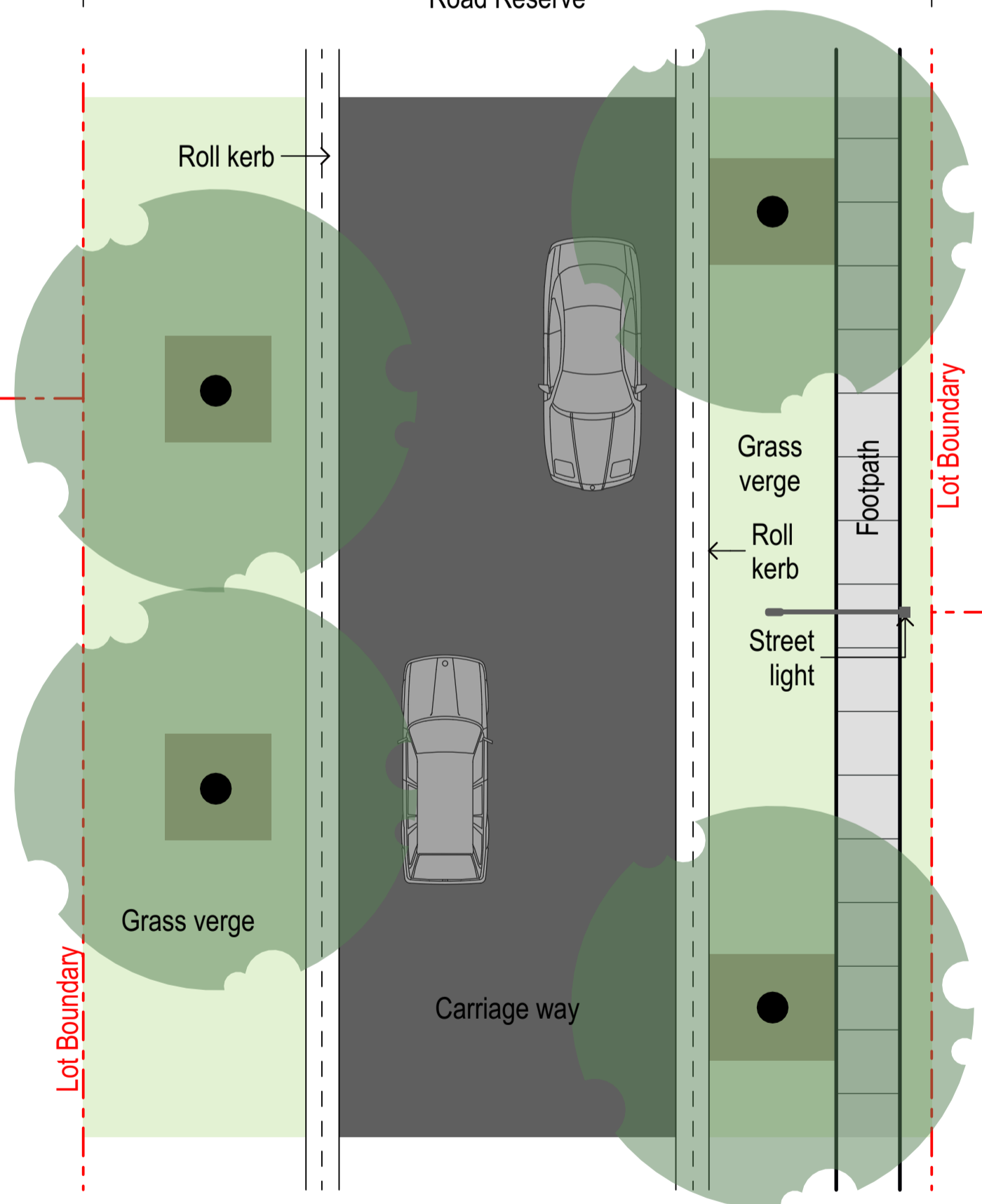
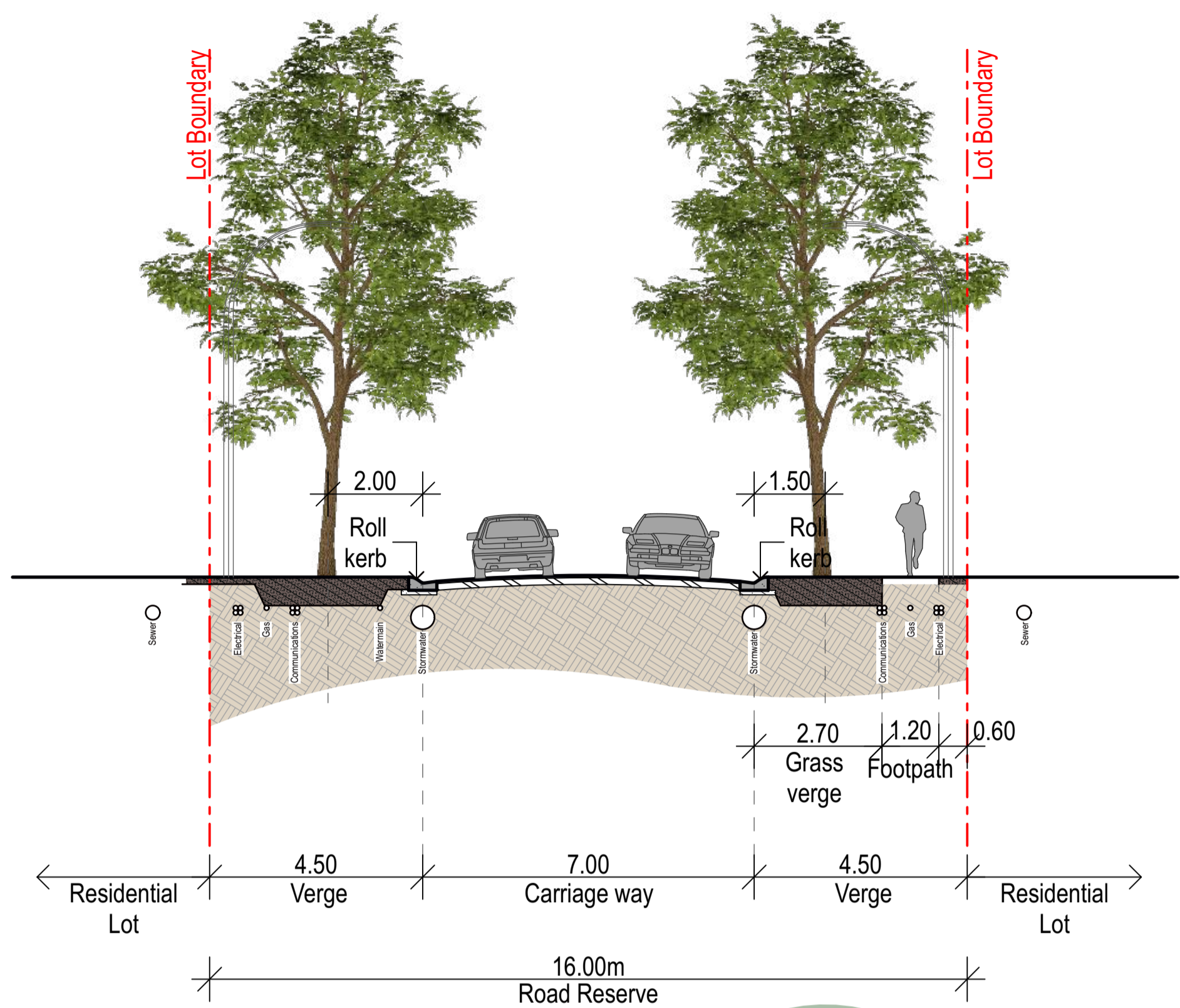
Prime Moss Vale Pty Ltd

DRAWING TITLE
Typical Street Arrangements

Project No : 18.08
Designed : RWS
Drawn : RWS/SK
Scale : 1:100@A1/1:200@A3

DRAWING NUMBER
L-SD-11

Printed at: 12:36 pm 01/10/20



Perspective view of streetscape



Primary Street Trees *Zelkova serrata* 'Green Vase' (Japanese Zelkova) and *Koelreuteria bipinnata* to line most access streets

A TYPICAL MINOR ACCESS STREET AND CUL-DE-SACS (L2) - 16M

Scale 1: 100



ARTERRA DESIGN PTY LTD ABN 40 069 552 610
 SUITE 602 / 51 RAWSON STREET, EPPING, NSW 2121
 P 02 9957 2466 F 02 9957 3977 W ARTERRA.COM.AU



REVISION	DESCRIPTION	CHKD	DATE
C	For Development Application-Updated	RWS	6/10/20
B	For Development Application	RWS	18/11/19
A	For Development Application	RWS	12/07/19

PROJECT & CLIENT
Aoyuan Moss Vale

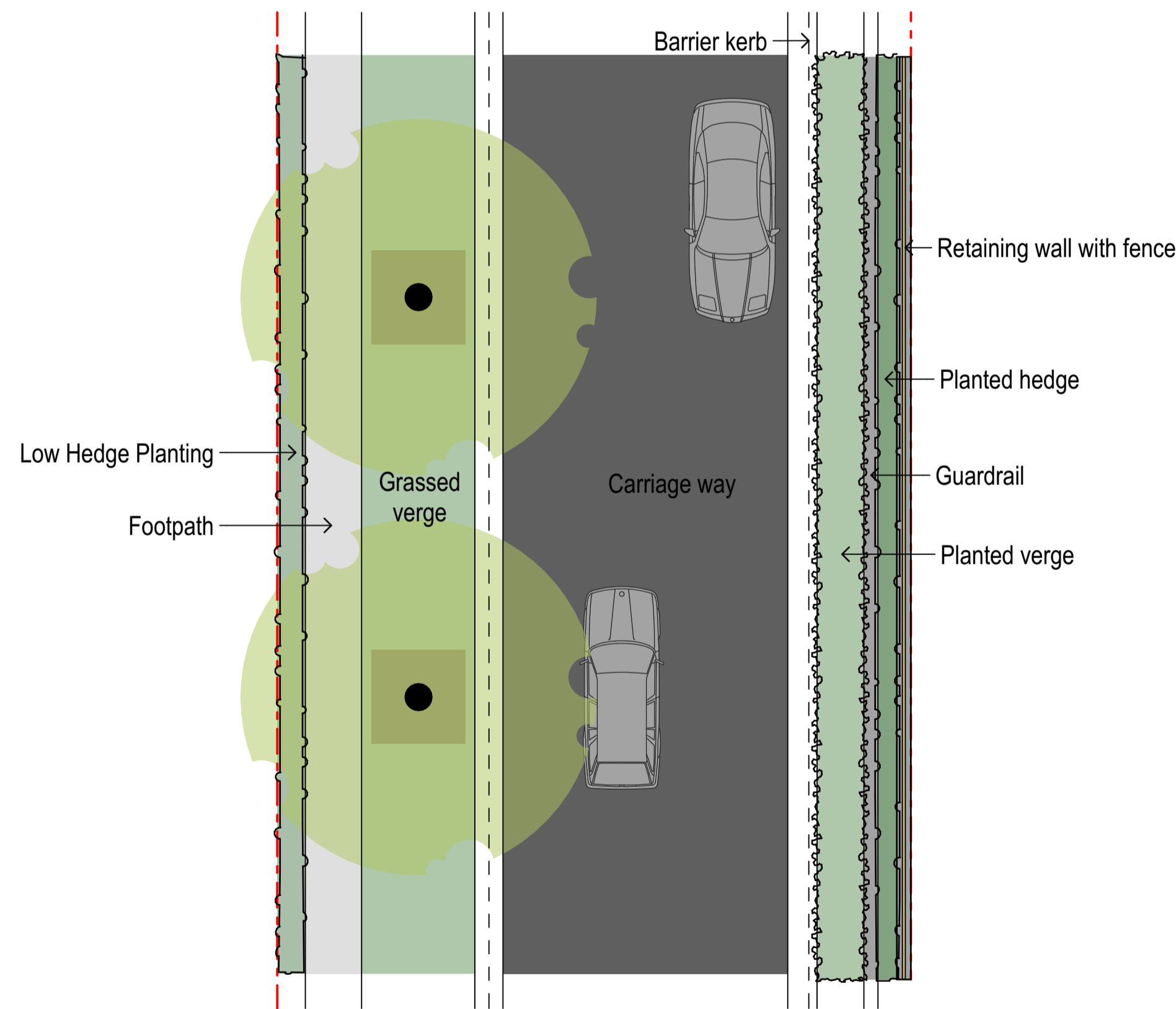
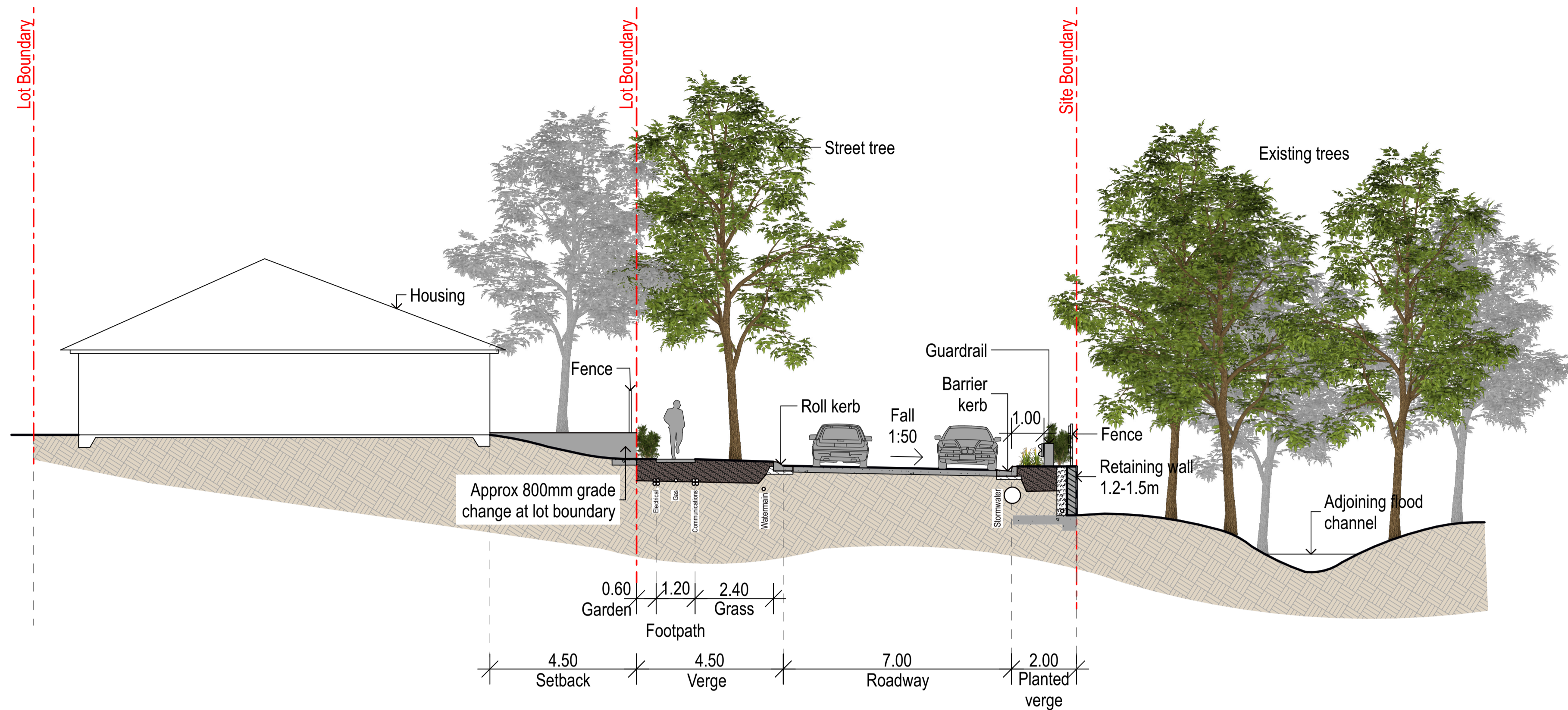
Prime Moss Vale Pty Ltd

DRAWING TITLE
Typical Street Arrangements

Project No : 18.08
 Designed : RWS
 Drawn : RWS/SK
 Scale : 1:100@A1/1:200@A3

DRAWING NUMBER
L-SD-12 REVISION
C

Printed at: 12:36 pm 6/10/20

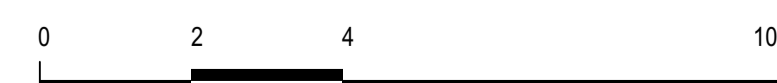


Pyrus calleryana 'Chanticleer' (Ornamental Pear) to line street

A TYPICAL MINOR ACCESS CUL-DE-SAC - 13.5M
Scale 1: 100



ARTERRA DESIGN PTY LTD ABN 40 069 552 610
SUITE 602 / 51 RAWSON STREET, EPPING, NSW 2121
P 02 9957 2466 F 02 9957 3977 W ARTERRA.COM.AU

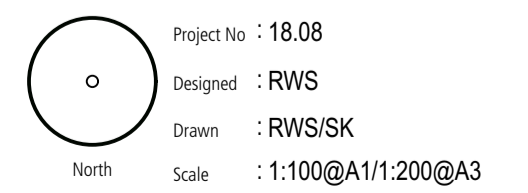


REVISION	DESCRIPTION	CHKD	DATE
C	For Development Application-Updated	RWS	6/10/20
B	For Development Application	RWS	18/11/19
A	For Development Application	RWS	12/07/19

PROJECT & CLIENT
Aoyuan Moss Vale

Prime Moss Vale Pty Ltd

DRAWING TITLE
Typical Street Arrangements

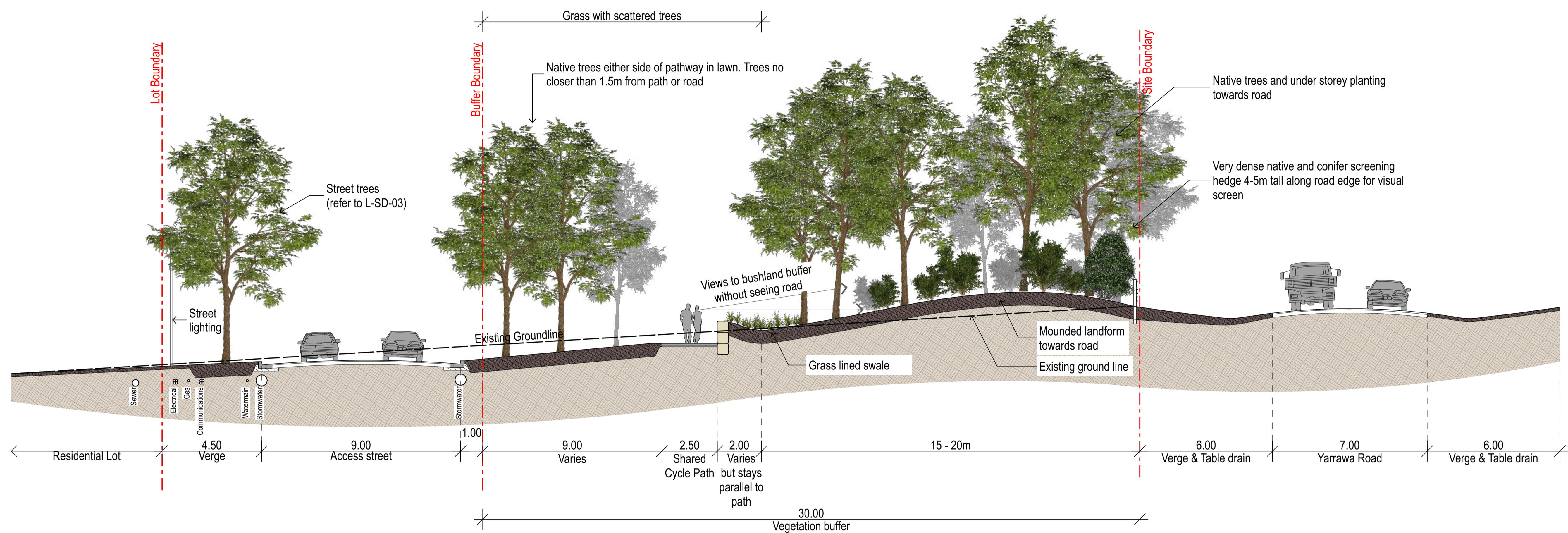


Project No : 18.08
Designed : RWS
Drawn : RWS/SK
North Scale : 1:100@A1/1:200@A3

DRAWING NUMBER
L-SD-13

REVISION
C

Printed at: 12:36 pm 6/10/20



A

TYPICAL YARRAWA ROAD BUFFER ZONE SECTION

Scale 1:100



Proposed dense hedge planting along boundary of Yarra Road combined with mounding



Proposed post and rail timber fence treatment to define boundary between site and Yarra Road



Indicative image of shared concrete pathway and adjoining grass lined swale through open space



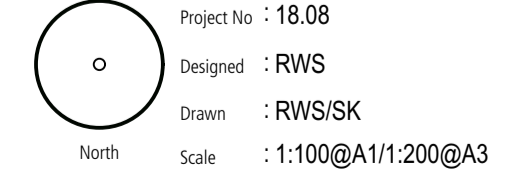
ARTERRA DESIGN PTY LTD ABN 40 069 552 610
 SUITE 602 / 51 RAWSON STREET, EPPING, NSW 2121
 P 02 9957 2466 F 02 9957 3977 W ARTERRA.COM.AU



REVISION	DESCRIPTION	CHKD	DATE
C	For Development Application-Updated	RWS	6/10/20
B	For Development Application	RWS	18/11/19
A	For Development Application	RWS	12/07/19

PROJECT & CLIENT
Aoyuan Moss Vale

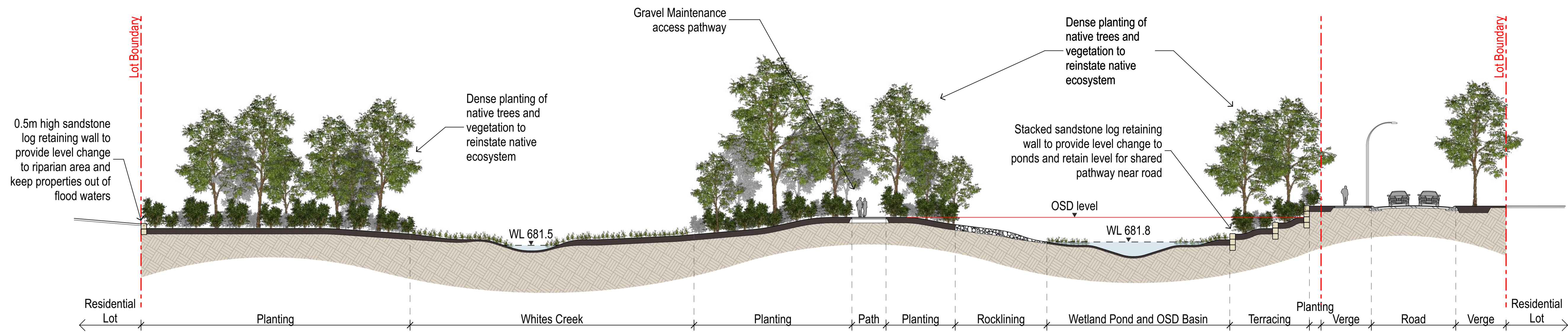
Prime Moss Vale Pty Ltd
 DRAWING TITLE
Yarra Road Frontage



Project No : 18.08
 Designed : RWS
 Drawn : RWS/SK
 North Scale : 1:100@A1/1:200@A3

DRAWING NUMBER
L-SD-14
 REVISION
C

Printed at: 12:36 pm 6/10/20



A TYPICAL CROSS SECTION THROUGH WHITES CREEK RIPARIAN CORRIDOR & OSD BASIN
Scale 1:200



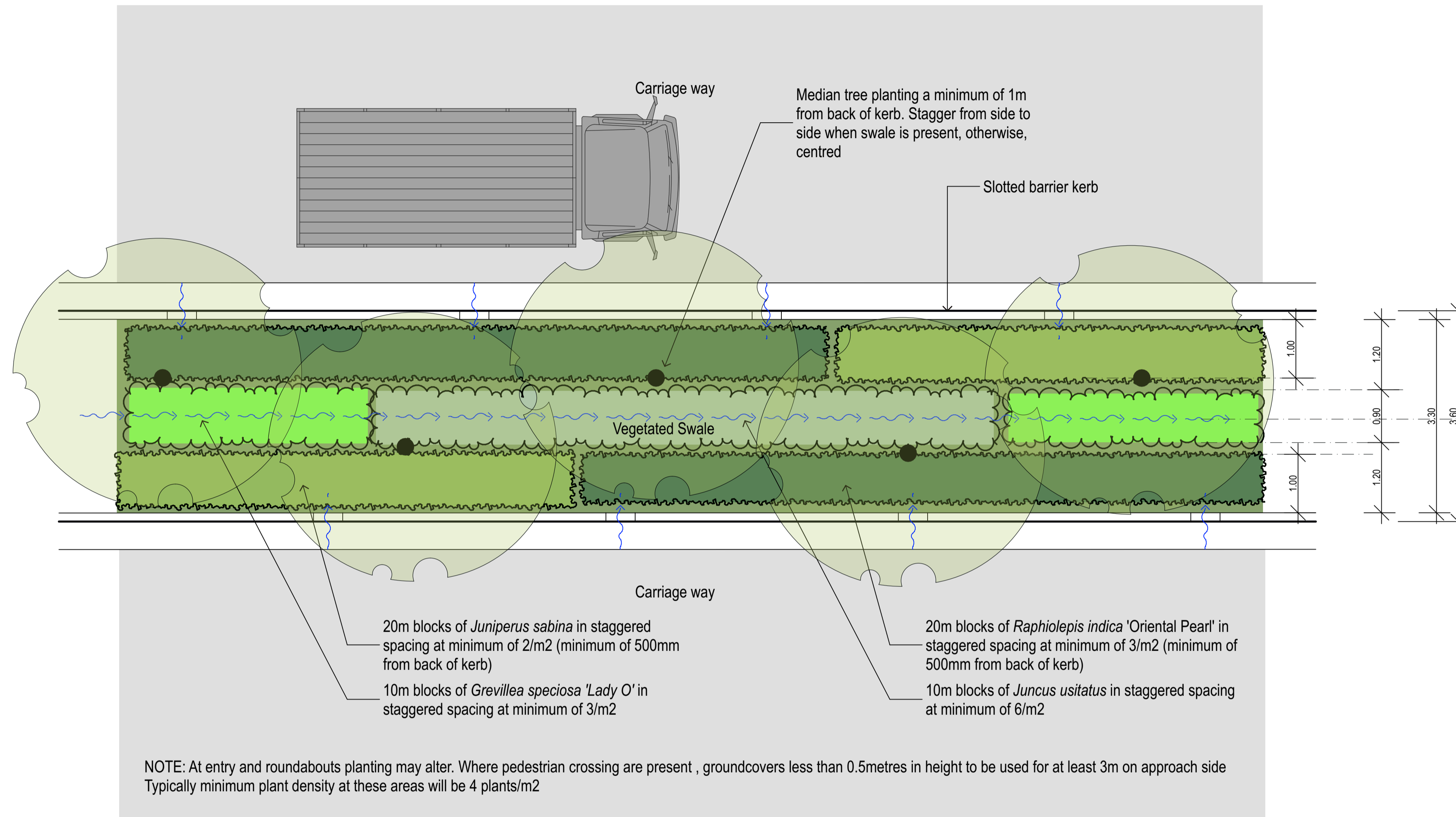
Indicative decomposed granite maintenance access path and separation of lawns from native revegetation



Artists impression of Whites Creek revegetation and pedestrian bridge across Whites Creek



Rocklined stream with rubble weirs and indicative creek line treatment





1 TYPICAL MEDIAN PLANTING OF BOULEVARD 1 (B1) CENTRAL VEGETATED DRAINAGE SWALE

Scale 1:50

NOTE:
 Indicative street lighting locations only.
 Final locations subject to detail design by Level 3 Electrical Consultant.

LEGEND

-  Single Outreach Street Light
typ. 300mm from lot boundary
-  Double Outreach Street Light
typ. centrally located in median strip



ARTERRA DESIGN PTY LTD ABN 40 069 552 610
 SUITE 602 / 51 RAWSON STREET, EPPING, NSW 2121
 P 02 9957 2466 F 02 9957 3977 W ARTERRA.COM.AU



REVISION	DESCRIPTION	CHKD	DATE
C	For Development Application-Updated	RWS	6/10/20
B	For Development Application	RWS	18/09/20
A	For Development Application	RWS	20/07/20

PROJECT & CLIENT
Aoyuan Moss Vale

Prime Moss Vale Pty Ltd
 DRAWING TITLE
Indicative Lighting Layout Plan

Project No : 18.08
 Designed : RWS
 Drawn : RWS/SK
 North Scale : 1:1000@A1/1:2000@A3
 DRAWING NUMBER
L-SD-18
 REVISION
C
 Printed at: 12:37 pm 6/10/20